



Cover Slips – Product Information

Bellco Glass products

The photo-etched coverslips help you to observe and evaluate micro manipulated cells or chromosome spreads. The photo-etched grid on the cover slip is comprised of individual alphanumeric coded squares of 0.6 mm x 0.6 mm. Up to 520 squares on one single cover slip facilitate the tedious work of evaluation of chromosome spreads. Forget double counted cells or chromosomes and save a lot of time and labor with the photo-etched cover slips!

Photo-etched Cover Slips

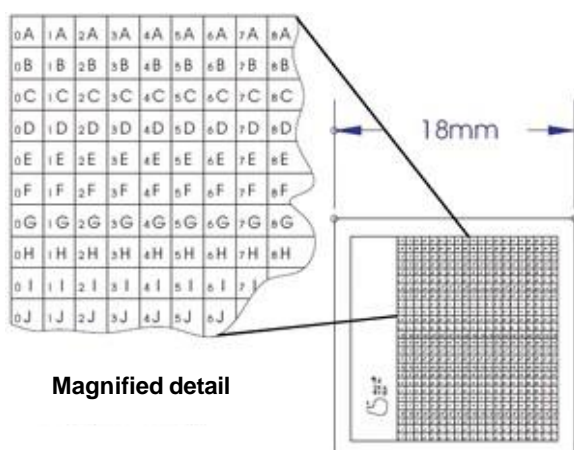
- Coding facilitates micromanipulation of cells or analysis of chromosome spreads
- Manufactured from Schott D263 glass ("German Glass") for fluorescence and confocal microscopy
- Coded area each square: 0,6 mm x 0,6 mm
- Glass thickness:
square: 0,19 - 0,25 mm (# 1,5)
round: 0,13 - 0,16 mm (# 1)

Reference: Lin, Pin-Fang and Frank H. Riddle 1981.
Photoengraving of Cover Slips and Slides to Facilitate
Mounting of Micromanipulated Cells or Chromosome
Spreads, Exp. Res. 134:485-488

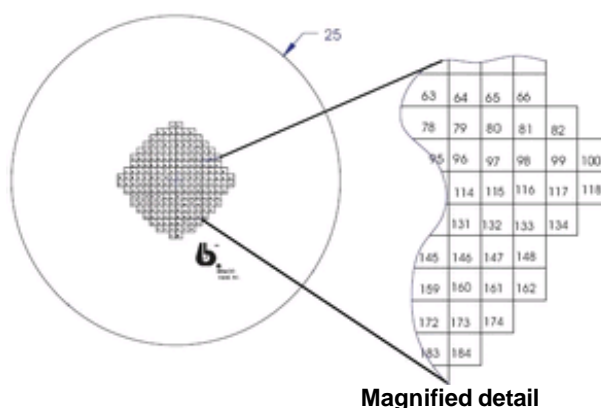


Cat. No.	Size	Squares	pcs./cs.
1916-91818	square, 18 mm x 18 mm	520	25
1916-92525	square, 23 mm x 23 mm	520	25
1916-91012	round, 12 mm	100	25
1916-91025	round, 25 mm	200	25
1943-70000	Vacuum Pick-up Tool, facilitates the handling of coverslips		1

Coding for square cover slips



Coding for round cover slips



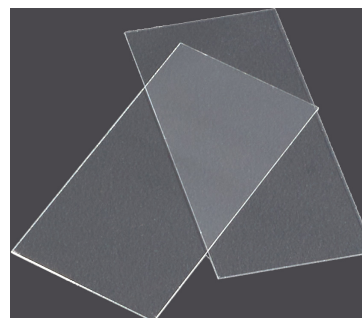
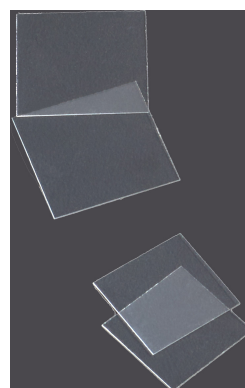
Bellco Biotechnology 340 Edrudo Road, Vinland, NJ 08360-349

Tel. 856-691-1075 · Fax 859-691-3247 · Internet: www.bellcoglass.com

Rectangular and Square Cover Slips

- Manufactured from Schott D263 glass ("German Glass") for fluorescence and confocal microscopy
- Glass thickness: 0,13 mm – 0,16 mm (# 1)

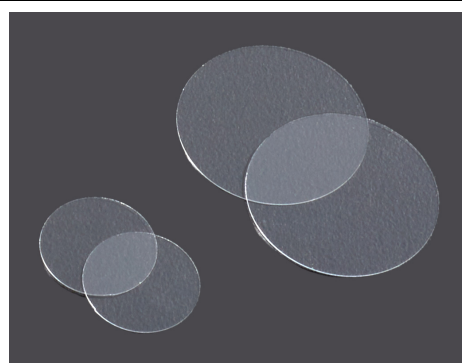
Cat. No.	Size	approx. pcs./cs.
1916-09009A*	9 mm x 9 mm	100
1916-09022*	9 mm x 22 mm	200
1916-09035A*	9 mm x 35 mm	100
1916-09050A*	9 mm x 50 mm	100
1916-10522A*	10.5 mm x 22 mm	100
1916-10535A*	10.5 mm x 35 mm	100
1916-10550A*	10.5 mm x 50 mm	100
1916-13054A*	13 mm x 54 mm	100
1916-12222A	22 mm x 22 mm	100
1916-24050A	24 mm x 50 mm	100
1916-25075	25 mm x 75 mm	100



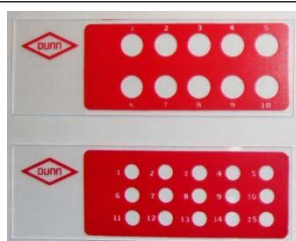
* For use with Bellco Leighton Tissue Culture Tubes. Additional information upon request.

Round Cover Slips

- Manufactured from Schott D263 glass ("German Glass") for fluorescence and confocal microscopy
- Glass thickness: 0,13 – 0,16 mm (# 1)
- Highest chemical resistance
- Ideal for neural tissue culture and hard-to-attach cells
- Specially developed for fluorescence and confocal microscopy with very low background fluorescence



Cat. No.	Diameter	approx. pcs. /cs.
1943-00005	5 mm	100
1943-10012A	12 mm	100
1943-10015A	15 mm	100
1943-10025A	25 mm	100



Multispot Microscope Slides

for Immunofluorescence Tests
and Cell Culture.

More information on request.

